

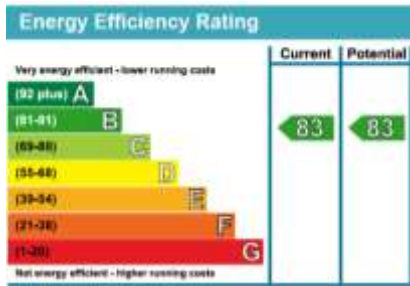


Bowline Court, Brentford, TW8

Bowline Court, TW8

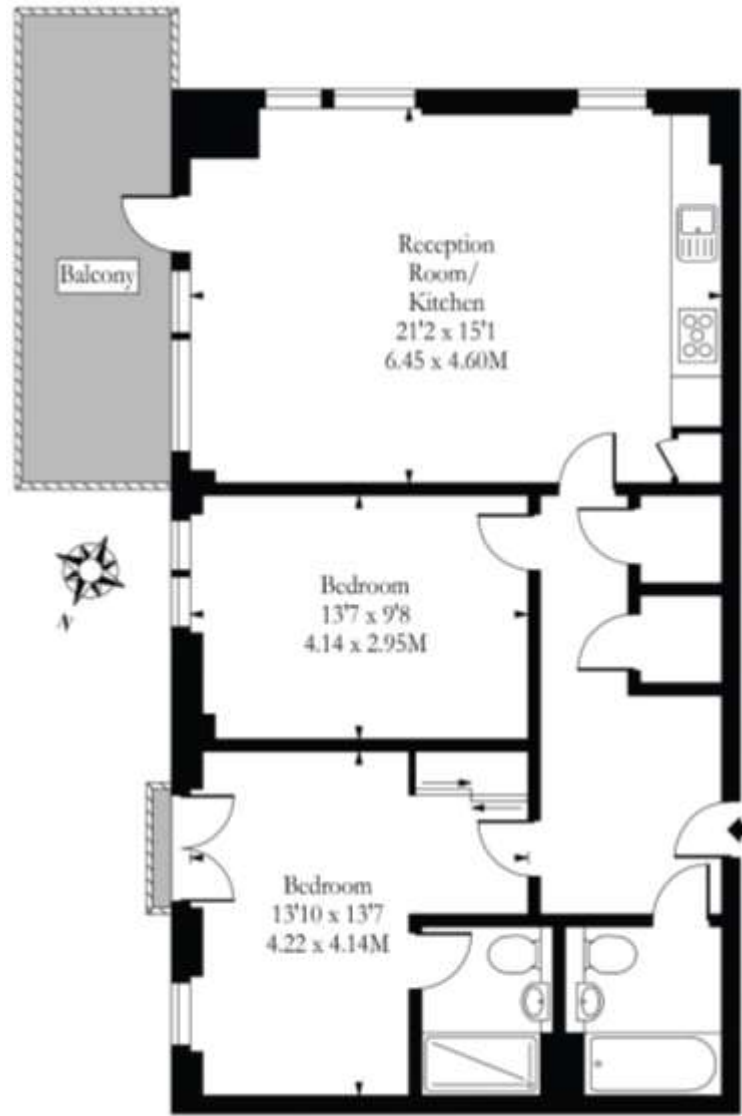
£403 per week Furnished

A spectacular two double bedroom apartment in Brentford Lock West. The property has been finished to the highest standard and comprises two double bedrooms with one benefiting from en-suite shower room and built in wardrobes, spacious double aspect living room with open plan fully fitted designer kitchen and a modern family bathroom. Further benefits include a large balcony providing canal views, secure allocated parking space, entry phone system, lift and superb storage facilities. Brentford Lock West is ideally situated close to the shops, bars and restaurants of Brentford High Street as well as the shopping districts of Richmond and Chiswick. The nearest station is Brentford National Rail and the motorist can easily access the A4/M4 with links both into and out of London.



Key information

- **Local Authority:** London Borough of Hounslow
- **Internal Area:** 839 sq. ft. / 77.95 sq. m.
- **Available from:** 8th June 2019



020 8996 0600

west@riverhomes.co.uk

28 Thames Road, Chiswick, W4 3RJ

riverhomes.co.uk

For clarification; These particulars are believed to be correct but their accuracy is not guaranteed and do not form part of any contract. Any photographs are intended as a guide only and it should not be assumed that any of the fixtures / fittings are included in any sale. Appliances, including central heating, have not been tested. All lease, service charge and ground rent details, if shown, have been provided by the vendor and have not been verified. If you require clarification of any points please contact us. Illustration Purpose Only - Whilst every attempt has been made to ensure the accuracy of the floor plan contained here. Measurements of doors, windows, rooms and other items are approximate and no responsibility is taken for any errors, omissions or mis-statements. The plan is for illustrative purpose only, is not to scale and should be used as such by any prospective purchaser.